

Eileamaidean Ciùil

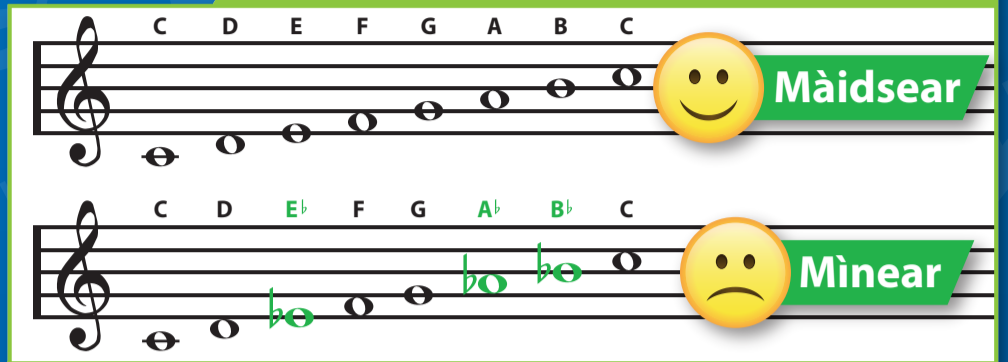
Tha grunn eileamaidean a' toirt buaidh air mar a tha pìos ciùil air a chluich agus air fuaim a' chiùil.

Pitse



'S e pitse dè cho àrd no cho ìosal 's a tha nota. Faodar pitse a chur air dòigh gu fonnmhor agus/no gu co-sheirmeach.

Tònalachd



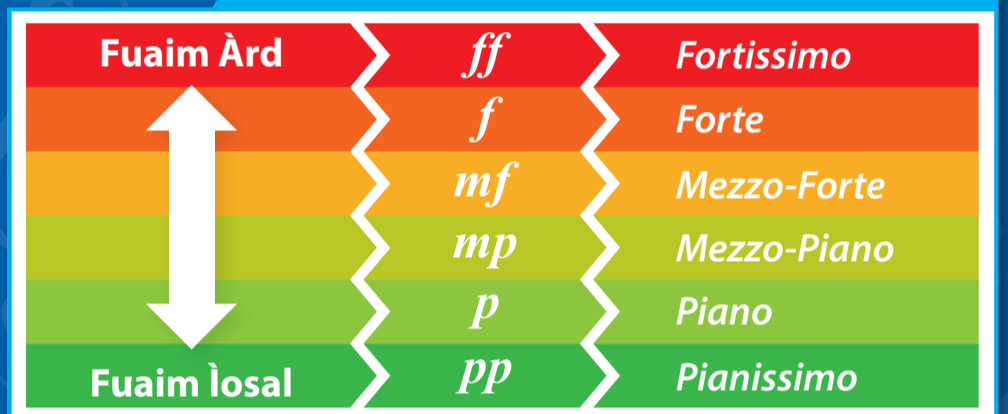
'S e tònalachd a bhith a' cleachdadh gleus sònraichte airson pìos ciùil a sgrìobhadh, me, G màidsear.

Structar



'S e structar am plana iomlan a th' air pìos ciùil.

Daineamaigs



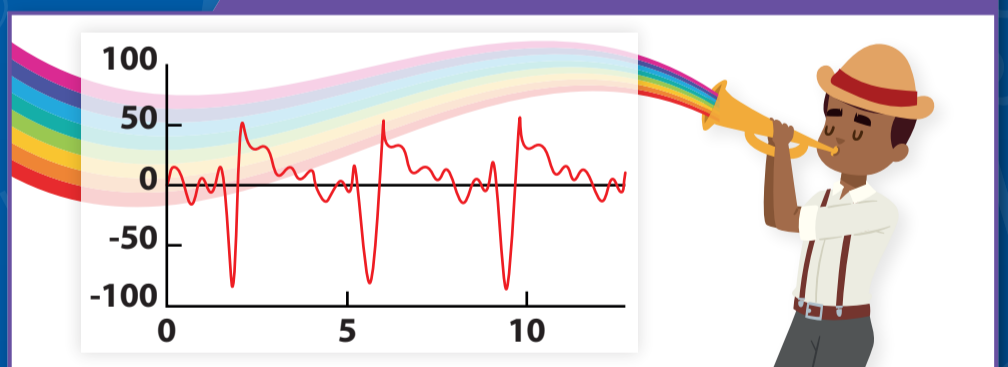
Tha daineamaigs a' sealltainn dè cho àrd no cho ìosal 's a bu chòir pìos ciùil a chluich.

Teacstar



Tha teacstar na chunntas air a' bhuidhean a tha aig fuinn, ruitheaman agus co-sheirmean còmhla. Tha iomadh filleadh de dh'fhuaim a' cruthachadh teacstar tiugh.

Sonorachd agus Timbre



'S e sonorachd an t-sreath fhuaim a nì ionnsramaid no guth. 'S e timbre gnè an fhuaim a nì ionnsramaid no guth.

Tempo



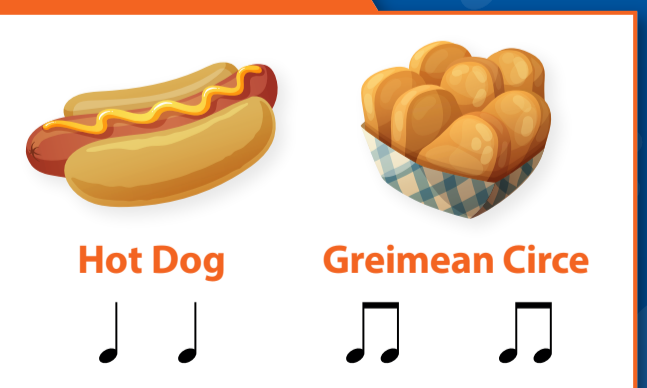
'S e tempo dè cho luath no cho mall 's a tha pìos ciùil air a chluich.

Meatrachd



'S e meatrachd am pàtran buillean a tha comharra-tìme a' sealltainn.

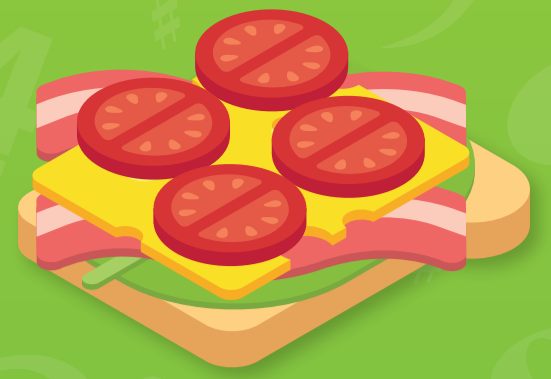
Ruitheam



'S e ruitheam am pàtran a nì faid fhuaim agus aicinnean.

Structar

'S e structar (no cruth) am plana iomlan a th' air pìos ciùil.



Cruth Dà-earrainn



Tha dà earrann ann an cruth dà-earrainn.



Cruth Trì-earrainn

Ann an cruth trì-earrainn tha a' chiad agus an treas earrann an aon rud.



Cruth Rondo

Ann an cruth rondo bidh prìomh thèama (A) a' sìor thilleadh an dèidh earrannan iomsgarach (B, C, D 's msa).



Teacstar

Tha teacstar a' toirt cunntas air mar a tha fuinn, ruitheaman agus co-sheirmean air am filleadh còmhla ann am pìos ciùil.

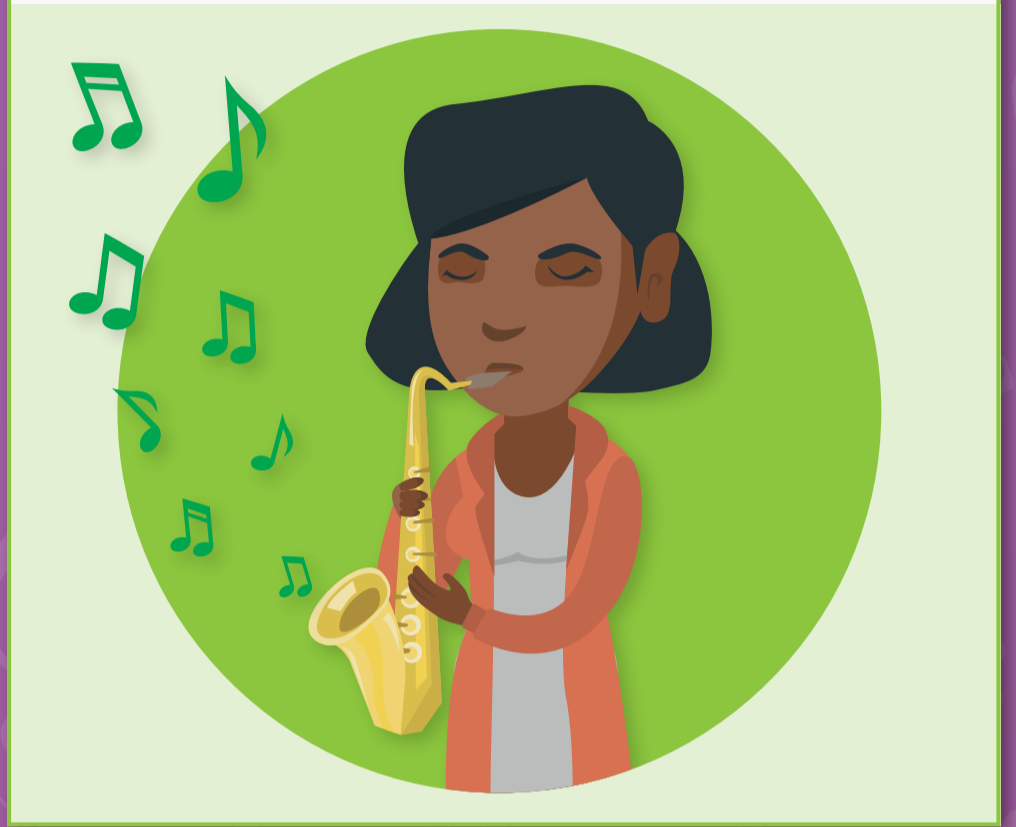
Teacstar Tiugh

Ma tha iomadh filleadh de dh'fhuinn, ruitheaman no co-sheirmean air an cluich còmhla, 's e teacstar **tiugh** a th' ann.



Teacstar Tana

Mura bheil ach grunnan fhillidhean de dh'fhuinn, ruitheaman no co-sheirmean air an cluich còmhla, 's e teacstar **tana** a th' ann.



Teacstar ciùil

Teacstar Monofonaig

Chan eil ach aon fhonn ann, gun cho-sheirmean, ged a dh'fhaodadh taic ruitheamach a bhith ann.



Teacstar Poilifonaig no Contrapuntal

Dà fhonn no barrachd air an cluich aig an aon àm.



Teacstar Homofonaig


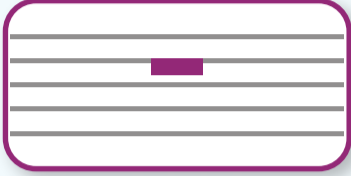

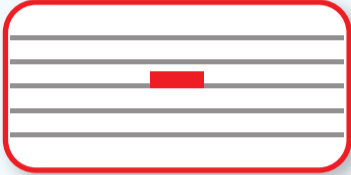



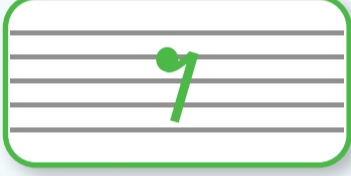




Dà phàirt no barrachd a tha co-sheirmeach 's a' gluasad aig an aon àm.



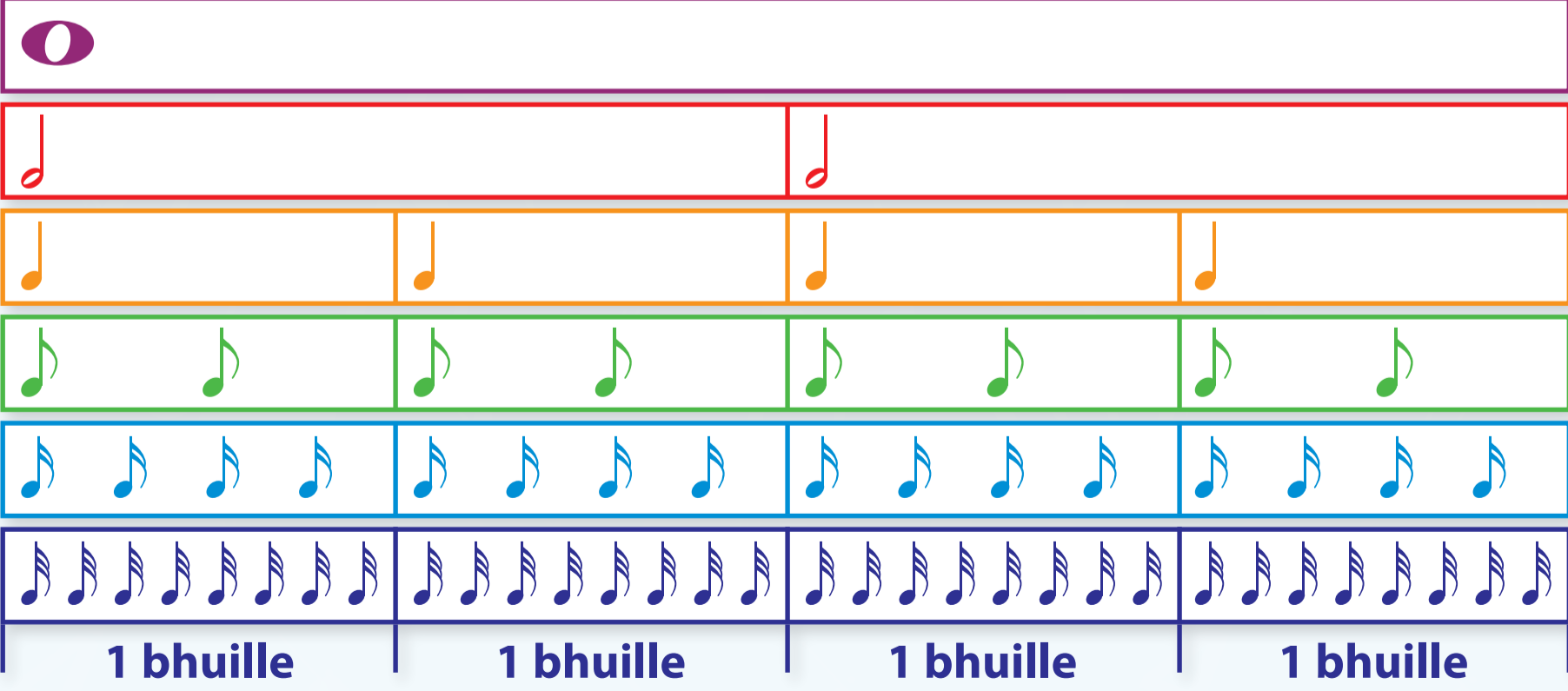
Faid

Tha faid a' ciallachadh dè cho fada no cho goirid 's a tha nota.

Faid Nota

| Nota | Ainm | Faid | Clos |
|-------------------------------------------------------------------------------------|-------------------------|-----------------------|---------------------------------------------------------------------------------------|
|  | Semibrìbh | 4 buillean |  |
|  | Minim | 2 bhuille |  |
|  | Croitseat | 1 bhuille |  |
|  | Cuèbhear | $\frac{1}{2}$ bhuille |  |
|  | Semicuèbhear | $\frac{1}{4}$ bhuille |  |
|  | Demisemicuèbhear | $\frac{1}{8}$ bhuille |  |

A' tuigsinn Notaichean



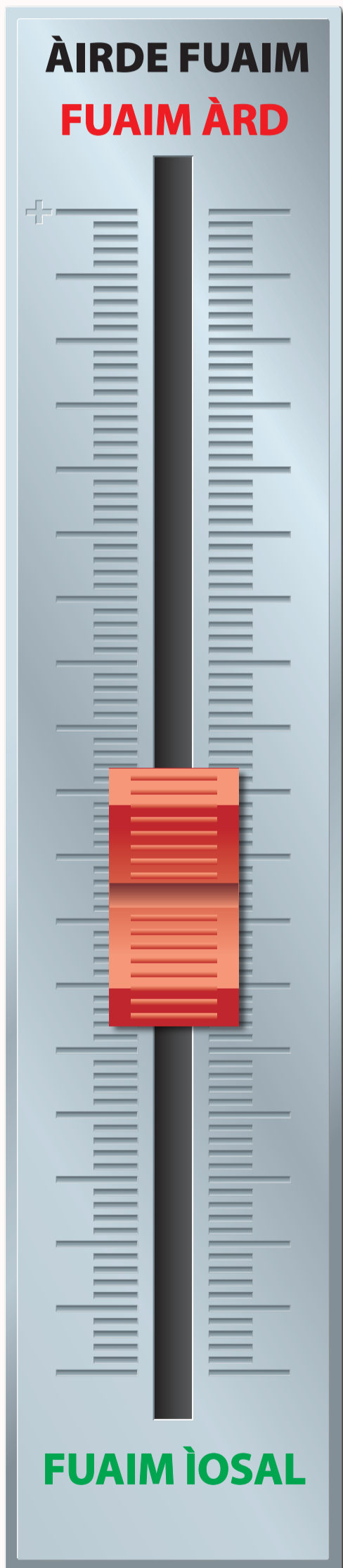
1 bhuille 1 bhuille 1 bhuille 1 bhuille

Daineamaigs

'S e daineamaigs dè cho àrd no cho ìosal 's a tha ceòl air a chluich

Comharran Daineamaig

Tha comharran agus abairtean Eadailtis ag innse mar a bu chòir am fuaim nuair a tha ceòl a chluich.



Crescendo

A' sìor fhàs nas àirde

ff

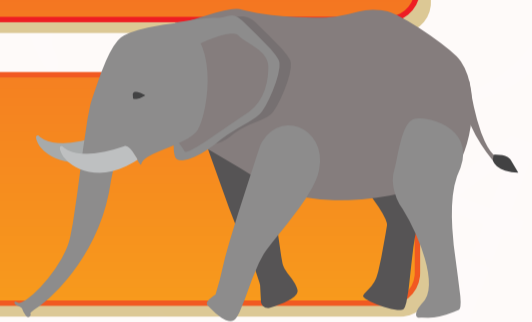
Fortissimo

Gu math àrd

f

Forte

Àrd



mf

Mezzo forte

Cuimseach àrd

mp

Mezzo piano

Cuimseach ìosal

p

Piano

Ìosal



pp

Pianissimo

Gu math ìosal



Diminuendo

A' sìor fhàs nas ìsle

Tempo

'S e tempo dè cho luath no cho mall 's a tha pìos ciùil air a chluich.

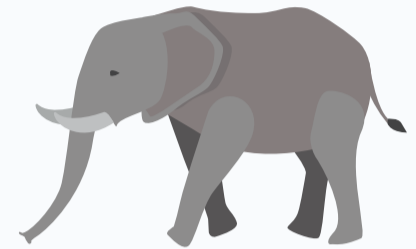
Lento

Gu mall



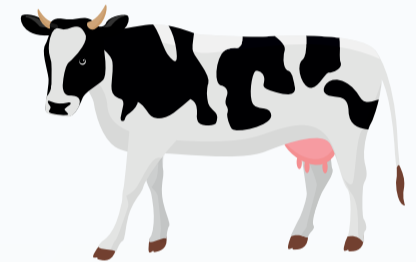
Largo

Gu mall 's gu mòralach



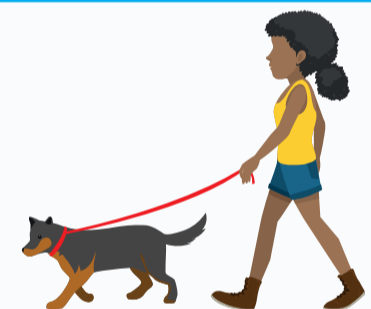
Adagio

Gu socair



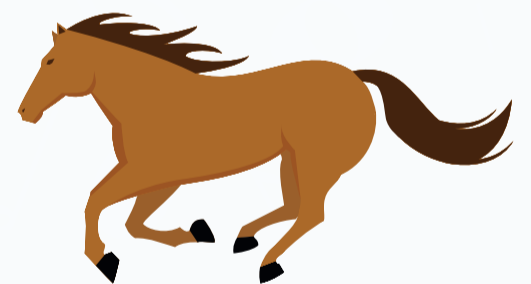
Andante

Mar choiseachd



Allegro

Gu luath



Vivace

Gu beothail



Presto

Gu math luath



Timbre

Tha timbre (no dath-tòna) a' toirt cunntas air gnè shònraichte an fhuaim a nì ionnsramaid no guth.

Dèan coimeas eadar tònnaichean gach ionnsramaid agus na tònnaichean air cuibhle-dhathan. Leis gu bheil gach ionnsramaid de stuth diofraichte, tha fuaim diofraichte aig gach aon.

Guth

Tha fuaim diofraichte agus gnè tònna diofraichte aig gach guth.



Druma

Tha druma de theaghlach nan ionnsramaidean buille-chiùil. Mar as trice tha craiceann agus slige air.



Trombaid

Tha an trombaid air a dèanamh de dh'umha. Tha i de theaghlach nan ionnsramaidean umha.



Tha am piàna na ionnsramaid buille-chiùil. Nuair a thèid iuchair a bhruthadh, bidh sin a' gluasad òrd a bhuaileas teud anns a' phiàna.

Piàna



Mar as trice tha clàirneid air a dèanamh de dh'fhiodh agus tha ribheid innte. Tha i de theaghlach nan ionnsramaidean fiodh-ghaothach.

Clàirneid



Tha fidheall falamh, air a dèanamh de dh'fhiodh, 's air a cluich le bogha. Tha i de theaghlach nan ionnsramaidean teudach.

Fidheall

Cuimhnich!

'S e an diofar eadar an aon nota a tha air a cluich air an fhidhill agus air a' chlàirneid, aig an aon phitse agus àirde-fuaim, an diofar ann an dath-tòna no timbre. 'S e an dòigh sa bheil ionnsramaid air a dèanamh, agus an stuth a tha innte, an t-adhbhar airson seo.

Pitse

'S e pitse dè cho ìosal no cho àrd 's a tha nota.

Pitse Ìosal

Nì ionnsramaidean mar tiùba, prò-bheus agus basùn fuaimean le pitse ìosal.



Pitse Àrd

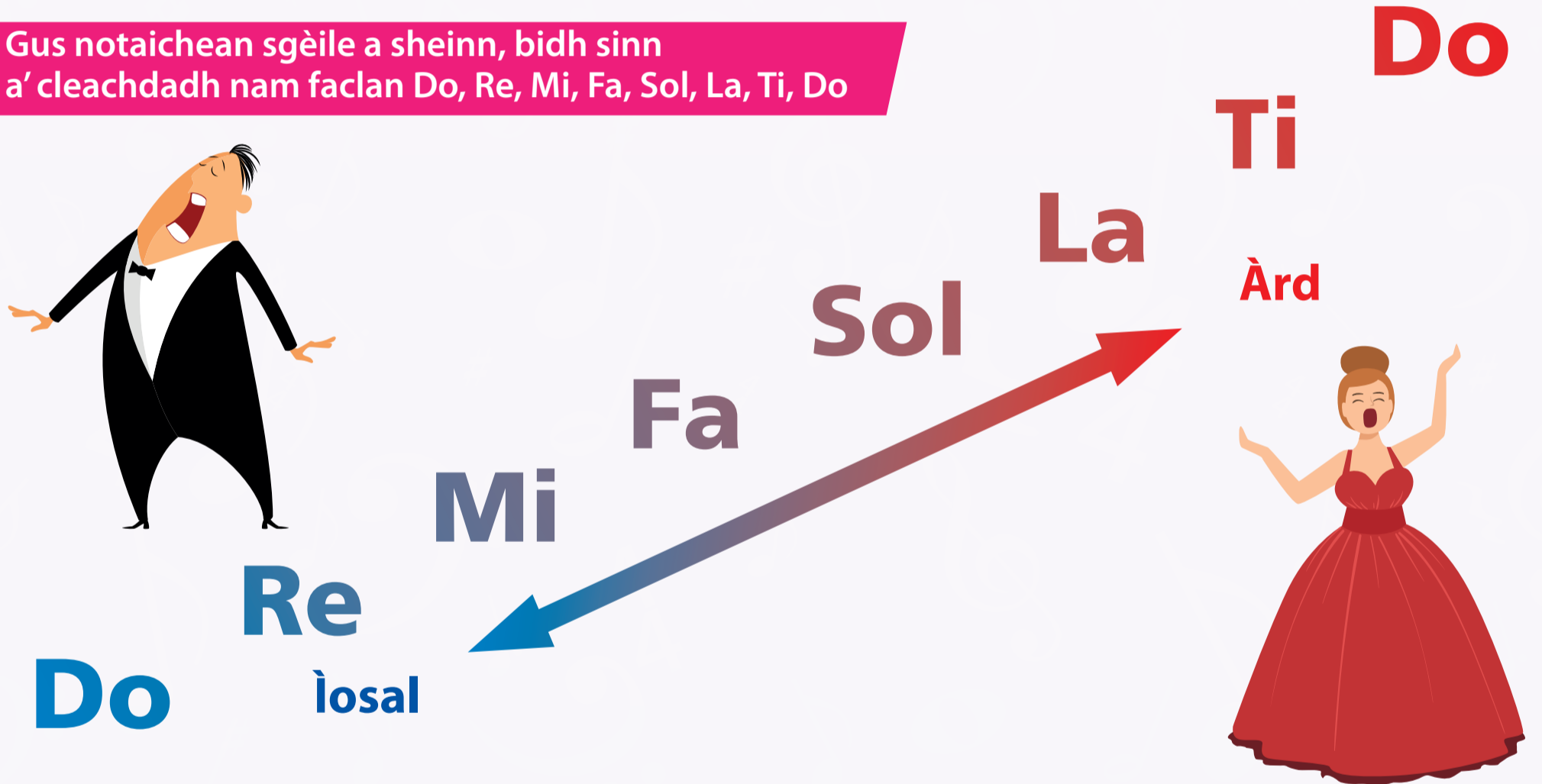
Nì ionnsramaidean mar piccolo, fidheall agus duiseal fuaimean le pitse àrd.



Sgèilichean

'S e sgèile sreath de notaichean bho phitse ìosal gu pitse àrd no bho phitse àrd gu pitse ìosal.

Gus notaichean sgèile a sheinn, bidh sinn a' cleachdadh nam faclan Do, Re, Mi, Fa, Sol, La, Ti, Do



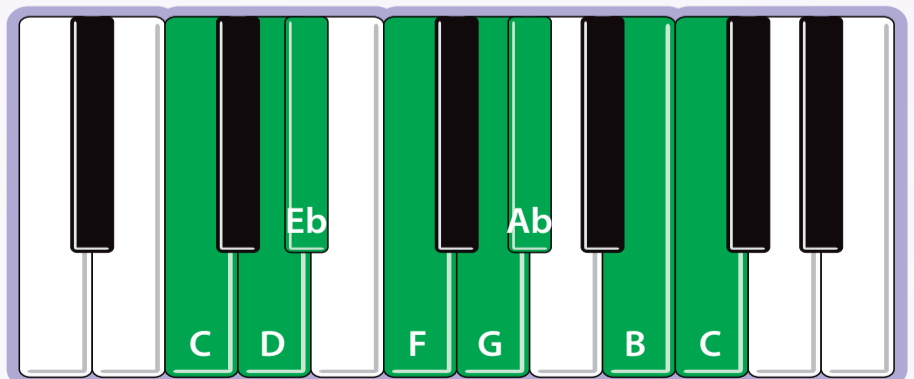
Tha iomadh seòrsa sgèile ann. Tha na sgèilichean màidsear agus mìnear cudromach. Tha eisimpleirean dhiubh gu h-ìosal.

Sgèile C Màidsear



Tha fuaim 'toilichte' aig sgèile màidsear.

Sgèile C Co-sheirmeach Mìnear



Tha fuaim 'brònach' aig sgèile mìnear.

Comharran Ciùil

Cuid de na comharran cumanta a tha air an cleachdadh ann an ceòl.

Àrd-chleaf

A' comharrachadh gur e an dàrna loidhne G os cionn C meadhain.

Comharra-gleus

Tha an comharra biorach air loidhne F a' comharrachadh gu bheil gach F air a' chlàir biorach.

Comharra-tìme

Tha seo air a leughadh mar ceithir ceithir, a tha a' ciallachadh gu bheil ceithir builleann croitseat anns gach bàr. Seo comharran-tìme eile:

$\frac{2}{4}$ $\frac{3}{4}$ $\frac{6}{8}$

Notaichean dotagach

Tha dotag a' cur 50% ri fàid na nota, me,

$\text{♩} = 1\frac{1}{2}$ $\text{♪} = 3$ builleann

A' Chlàir

'S e a' chlàir na còig loidhnichean agus na ceithir beàrran air a bheil ceòl air a sgrìobhadh.

Beus-chleaf

A' comharrachadh gur e an ceathramh loidhne F fo C meadhain.

Clos

Tha seo a' comharrachadh sàmhchair airson aon bhuille. Seo closan eile:

— — 7 7 7

Biorach

Tha an comharra biorach a' cur na nota suas semitòn bho C nàdarra gu C bhiorach.

Nàdarra

Tha an comharra nàdarra ag atharrachadh na nota seo bho C bhiorach gu C nàdarra. Bidh comharra nàdarra a' cur às do chomharra biorach no flat.

Bàr-loidhne

Tha bàr-loidhne a' briseadh a' chiùil na bhàraichean.

Bàr-loidhne Dhùbailte

Tha bàr-loidhne dhùbailte a' comharrachadh deireadh pìos ciùil.

Notaichean Ciùil

Mar a tha na notaichean air cliath co-cheangailte ris na h-iuchraichean air meur-chlàr.

Notaichean air a' Chlàr

Àrd-chleaf

Beus-chleaf

C Meadhain

Notaichean air Meur-chlàr

Tòna (ceum slàn)

Semitòn (leth-cheum)

Ochdad

C Meadhain

Semitòn (leth-cheum)

Tòna (ceum slàn)

Gus na notaichean air loidhnichean an àrd-chleaf a chuimhneachadh, ionnsaich an rann Beurla seo:

Gus na notaichean ann am beàrn an àrd-chleaf a chuimhneachadh, ionnsaich am facal 'face'.

E very G ood B oy D eserves F ruit

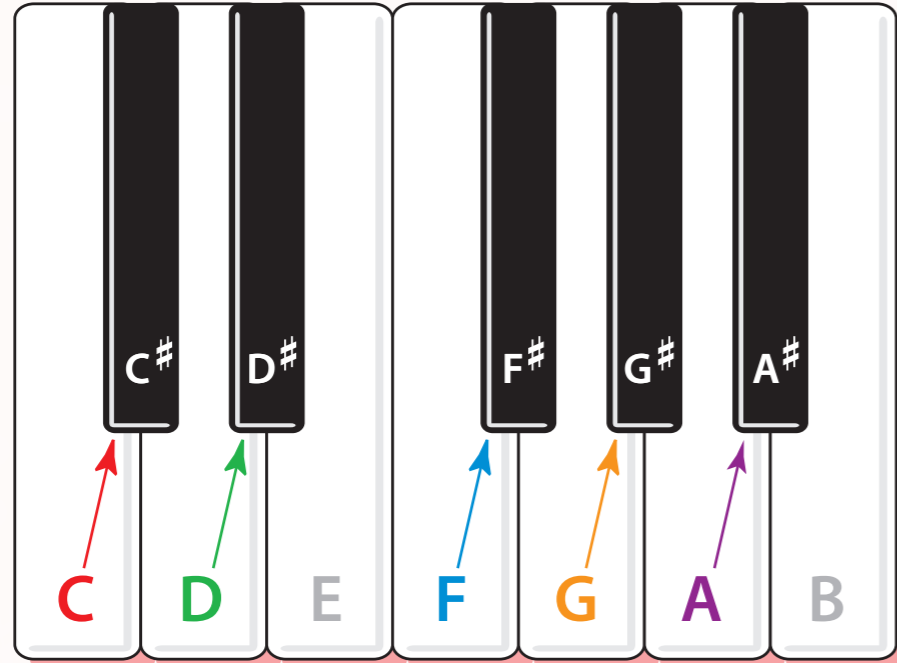
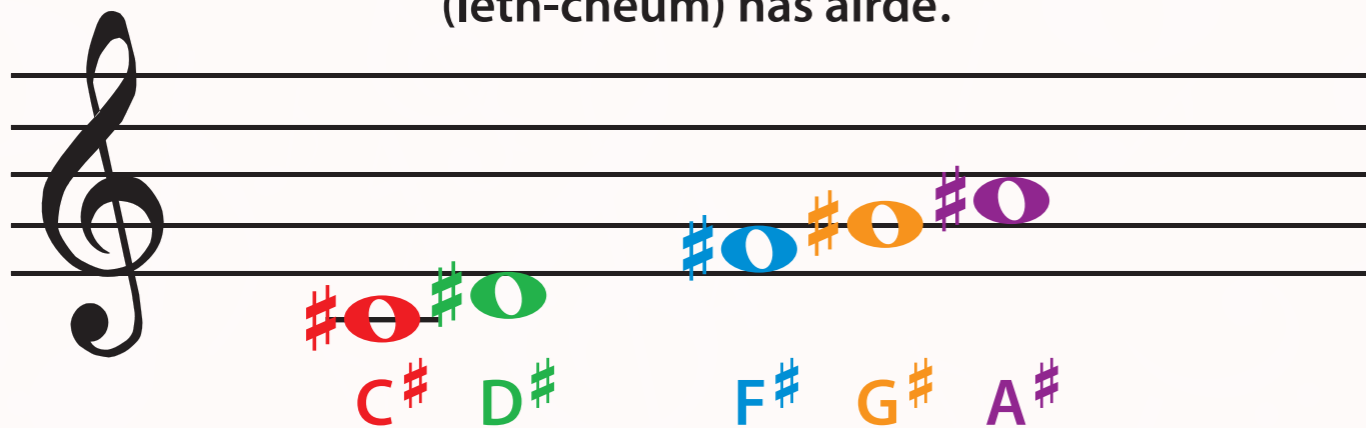
F A C E

Notaichean Biorach & Flat

Tha comharra biorach no flat air thoiseach air nota ag iarraidh oirnn an nota a chluich semitòn nas àirde (biorach) no nas ìsle (flat). Air meur-chlàr, 's iad na h-iuchraichean dubha na notaichean biorach agus flat, agus tha 2 ainm air gach iuchair dhubh.

Biorach

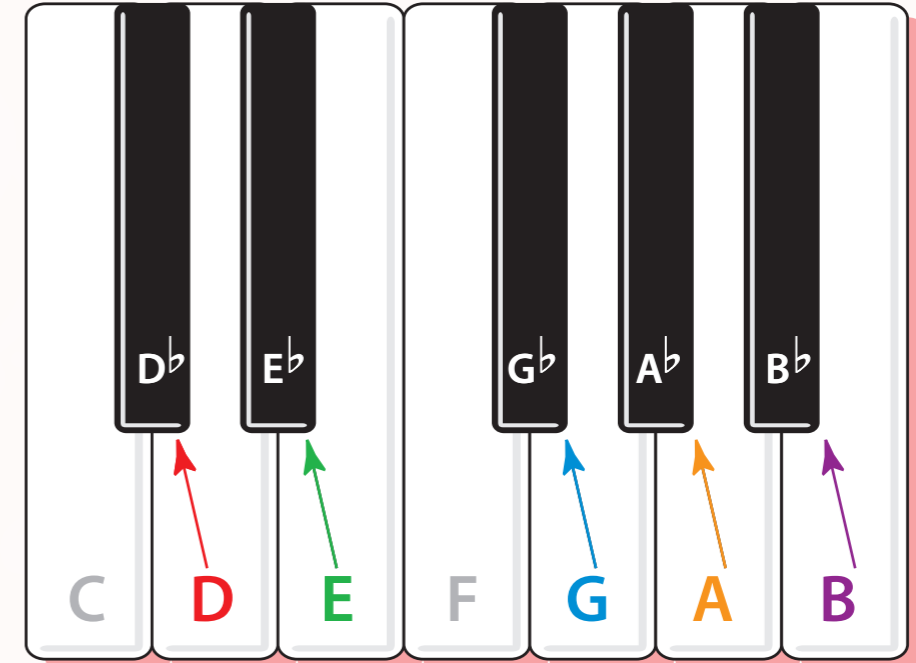
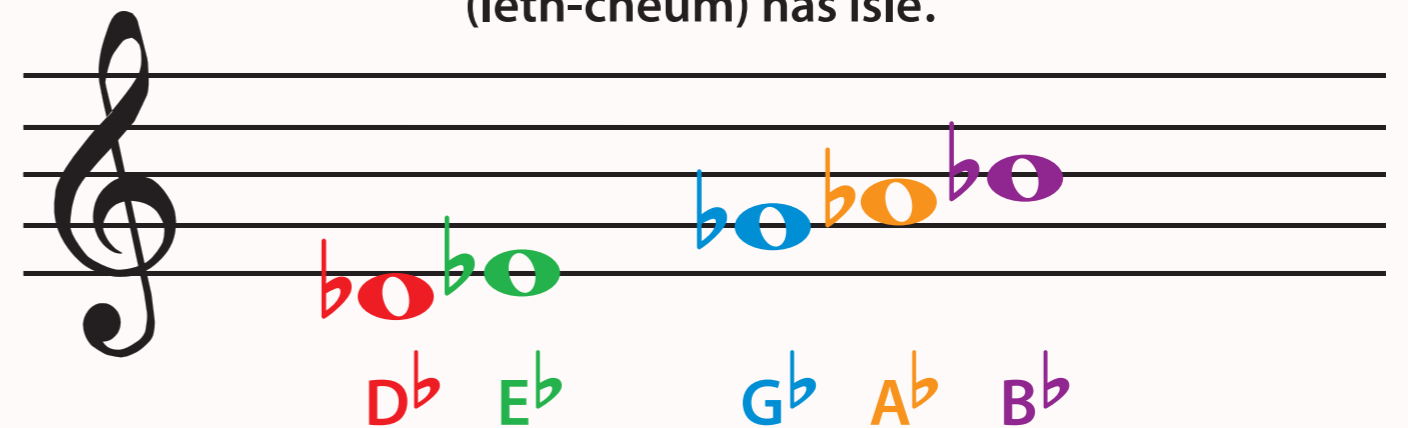
Tha comharra biorach a' ciallachadh 'gluais semitòn (leth-cheum) nas àirde'.



Cuir do chorrach air C meadhain agus gluais suas leth-cheum chun na h-ath nota dhuibh – 's e seo 'C Bhiorach' no C#.

b Flat

Tha comharra Flat a' ciallachadh 'gluais semitòn (leth-cheum) nas ìsle'.



Cuir do chorrach air D agus gluais sìos leth-cheum chun na h-ath nota dhuibh – 's e seo 'D Flat' no D^b.

Enharmonaigs

CUIMHNICH

Tha 2 ainm air gach nota dhubh

- "C" Bhiorach = "D" Flat.
- "D" Bhiorach = "E" Flat.
- "F" Bhiorach = "G" Flat.
- "G" Bhiorach = "A" Flat.
- "A" Bhiorach = "B" Flat.

= Bhiorach

b = Flat

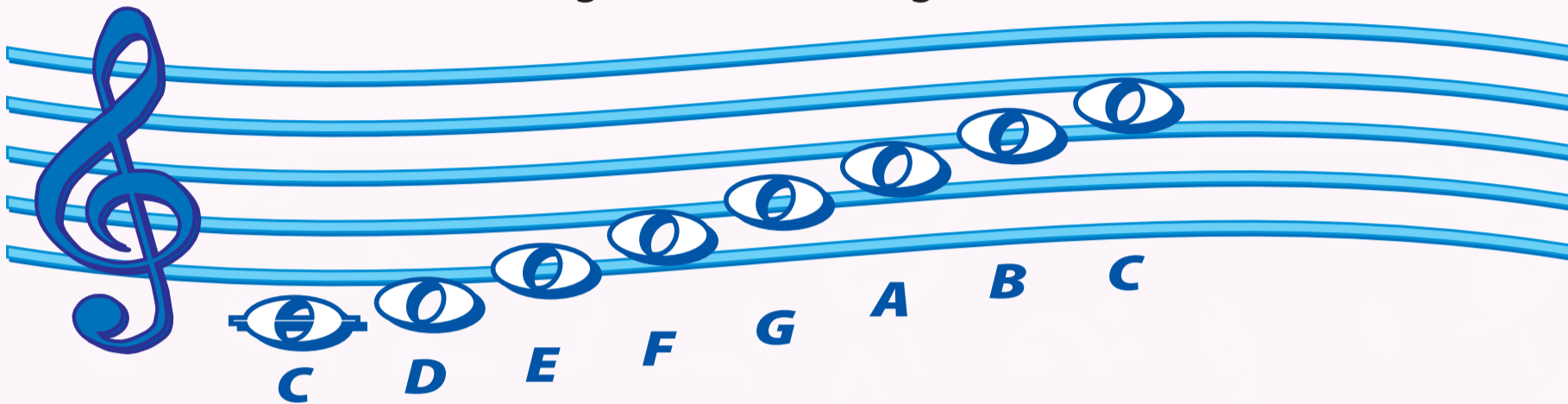
Còrdan

'S e còrd, trì notaichean no barrachd a tha air an cluich còmhla.

A' togail còrd

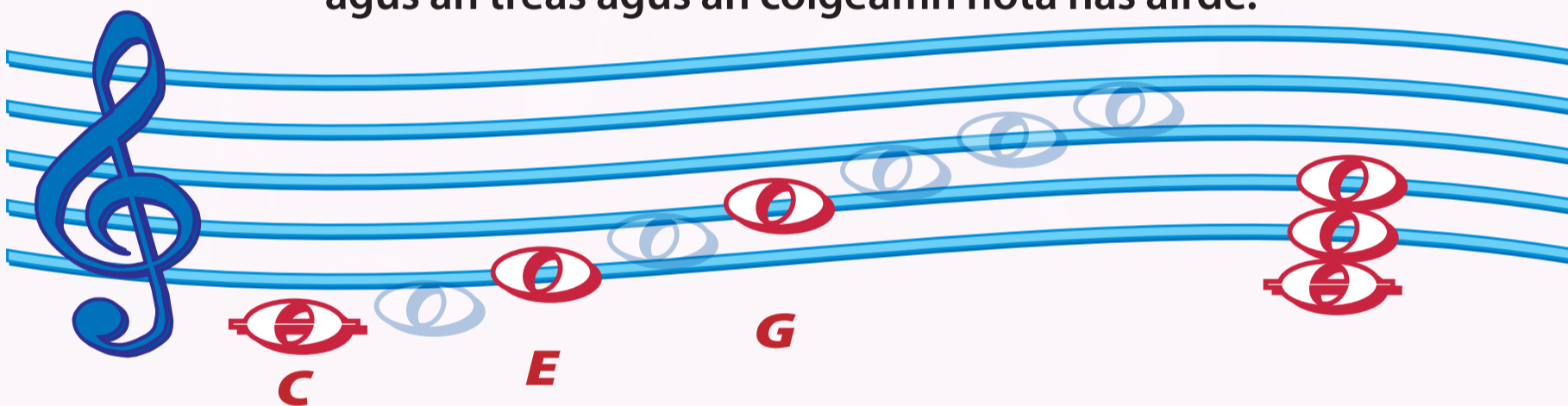
Sgèile C Màidsear

Faic sgèile C Màidsear gu h-ìosal.



Traid Tonaig C Màidsear

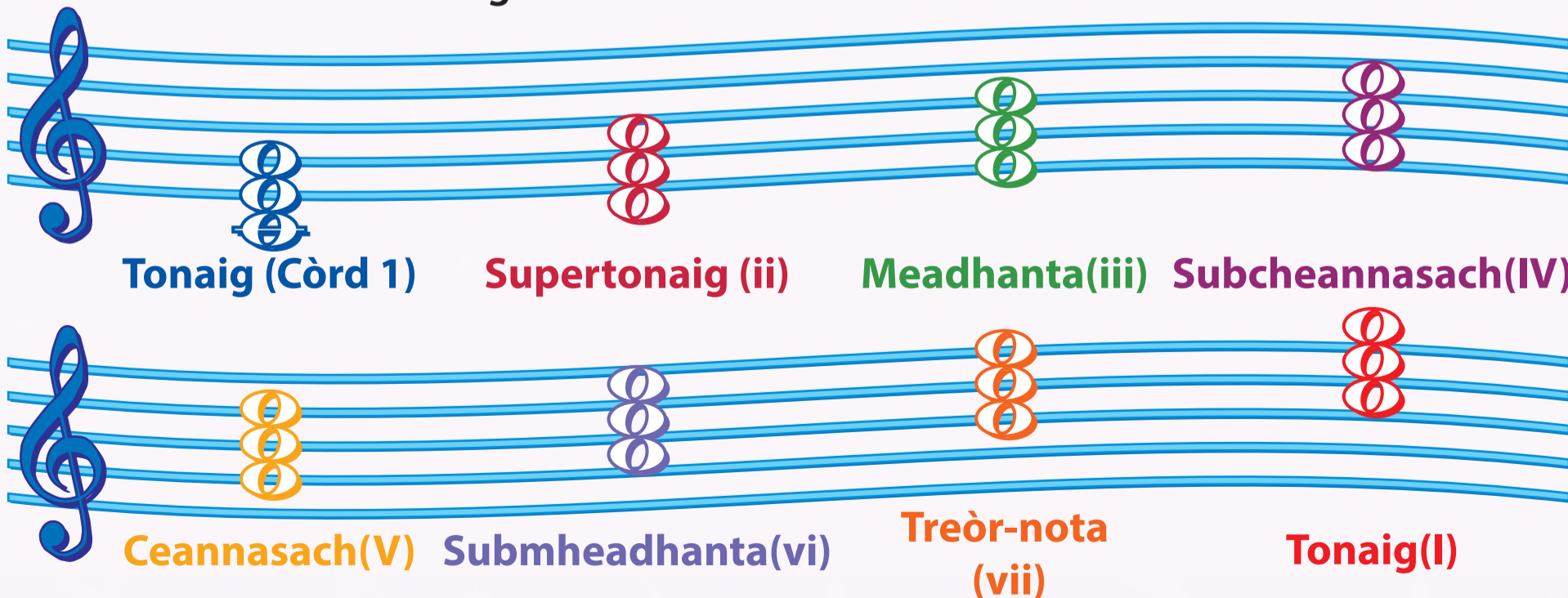
'S e *traid* tonaig còrd trì-nota anns a bheil nota, agus an treas agus an còigeamh nota nas àirde.



1d Nota + 3mh Nota + 5mh Nota = **Traid Tonaig C Màidsear**

Traidan

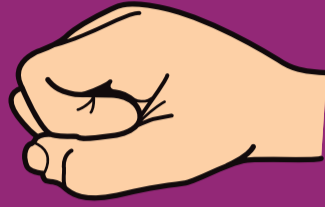
Faodar traid a thogail air nota sam bith. Seo traidheadan C màidsear.



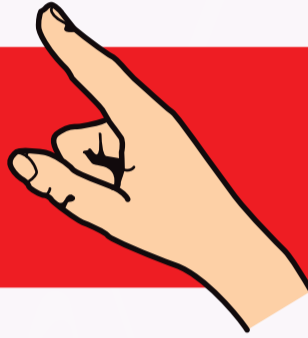
Kodaly

'S e Kodaly, no Solfège, siostam de chomharran làimhe a tha a' riochdachadh nam pitsichean ann an sgèile tònalach.

Ainmean agus Comharran Làimhe



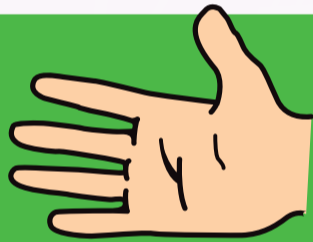
Do



Ti



La



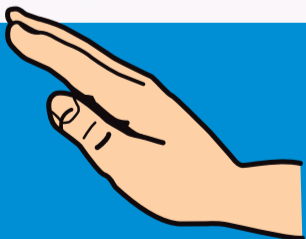
Sol



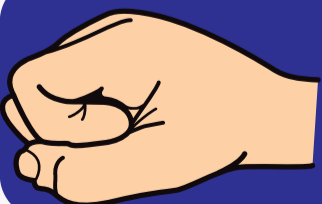
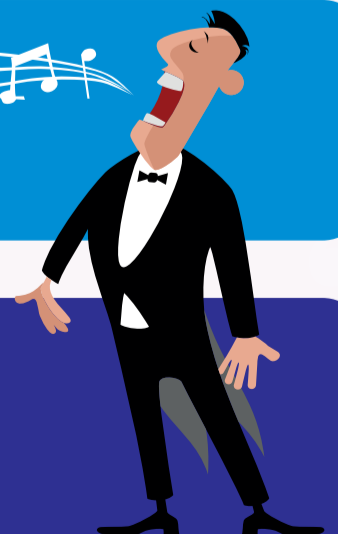
Fa



Mi



Re

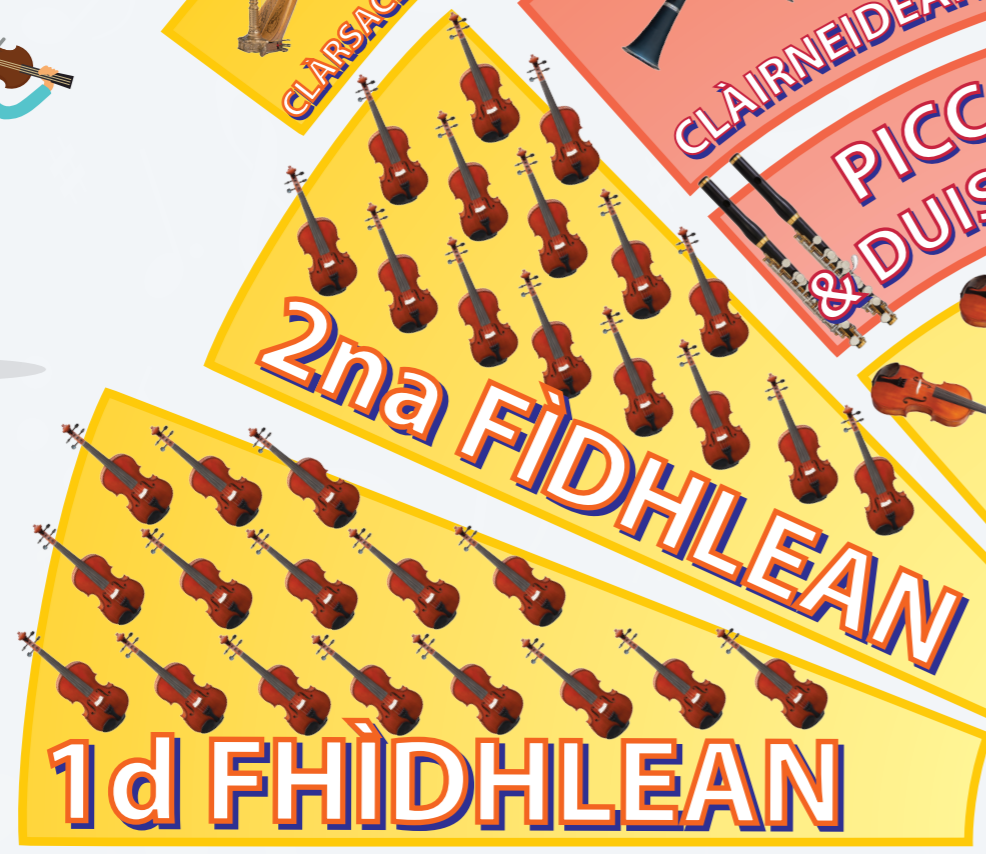
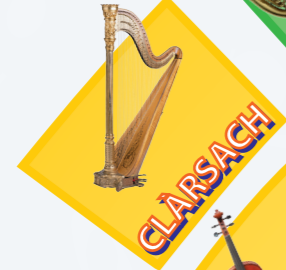


Do

An Orcastra

Tha ceithir roinnean ann an orcastra àbhaisteach: teudan, fiodh-ghaothach, umha agus buille-chiùil.

- Beus-dhruma
- Teud-dhruma
- Ciombal
- Glockenspiel
- Triantan
- Tam Tam / Gong
- Clagan Tiùbach



Clàr-iùil

- Teudan
- Fiodh-ghaothach
- Umha
- Buille-chiùil
- Stiùiriche



An Teaghlach Teudach

Fidheall



Bhìola



Cello



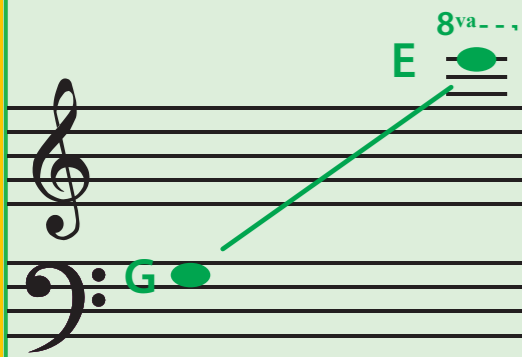
Prò-bheus



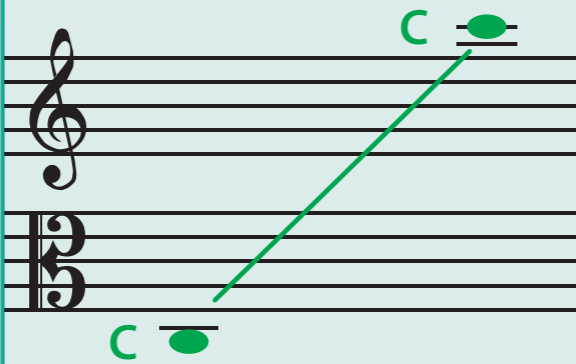
Harp



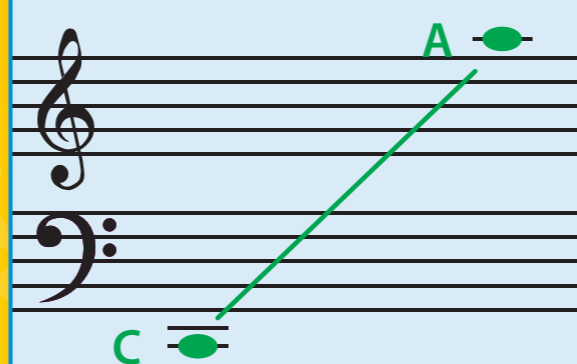
Raon Pitse



Raon Pitse

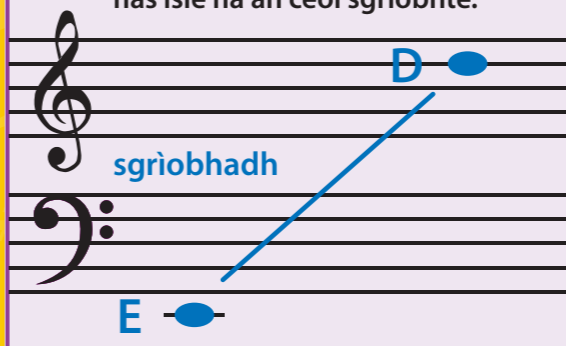


Raon Pitse

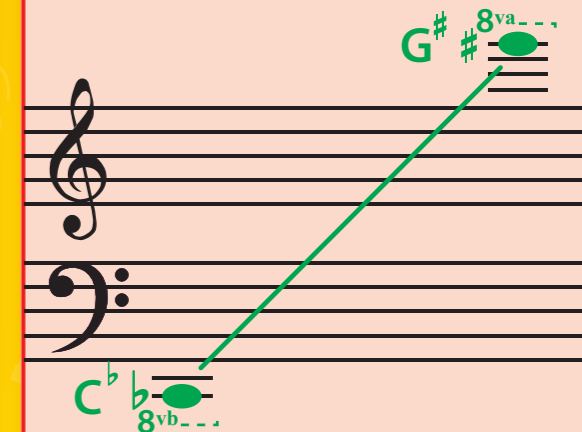


Raon Pitse

Tha fuaim a' phrò-bheus ochdad nas isle na an ceòl sgrìobhte.



Raon Pitse

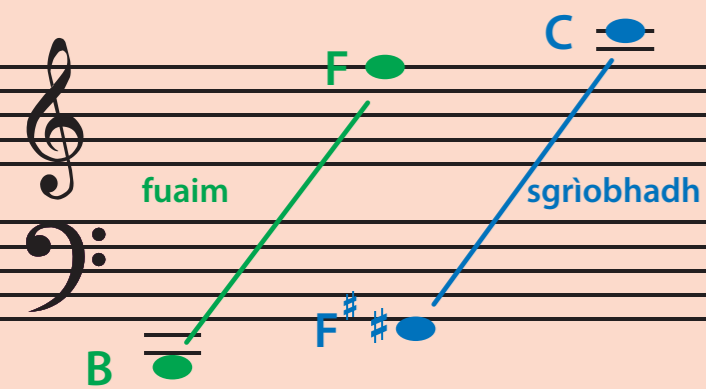


An Teaghlach Umha

Còrn Frangach



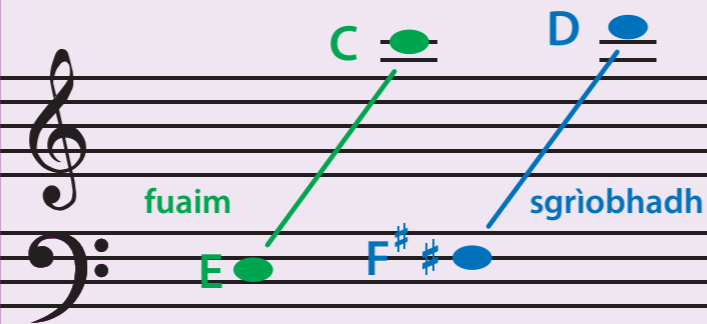
Raon Pitse



Trombaid



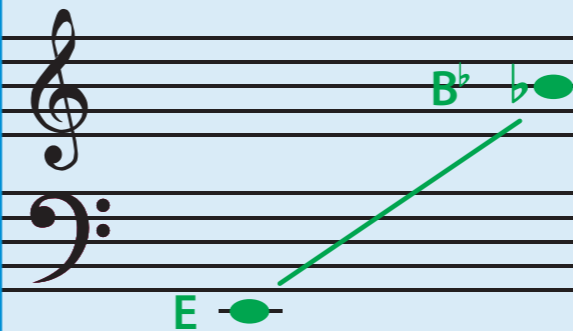
Raon Pitse



Trombòn



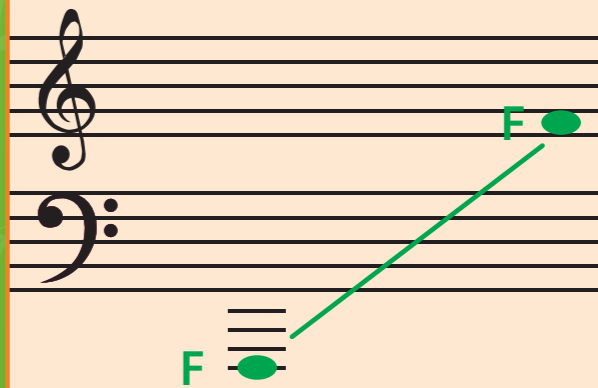
Raon Pitse



Tiùba



Raon Pitse

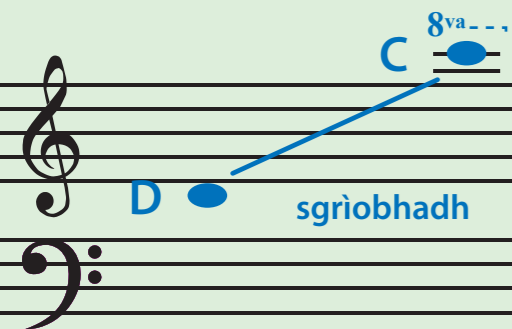


An Teaghlach Fiodh-ghaothach – Pàirt a h-Aon

Piccolo



Raon Pitse

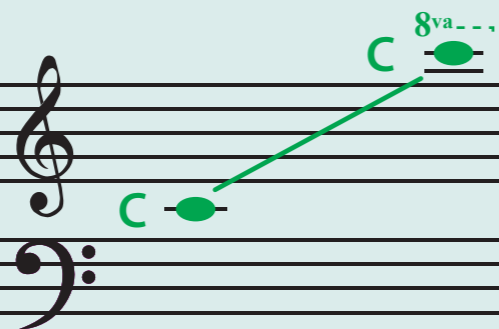


Tha fuaim a' phiccolo ochdad nas àirde na an ceòl sgrìobhte.

Duiseal



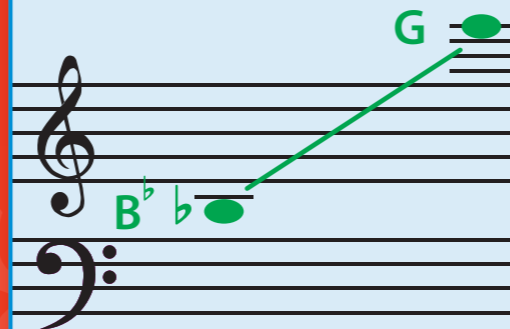
Raon Pitse



Oboe



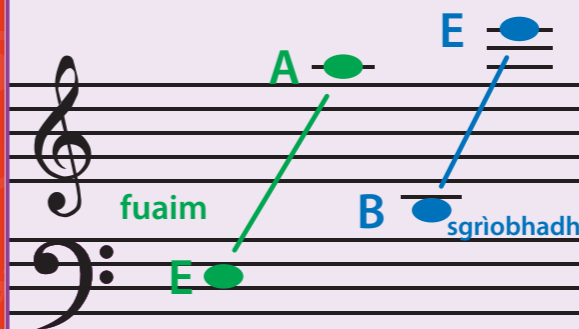
Raon Pitse



Cor Anglais



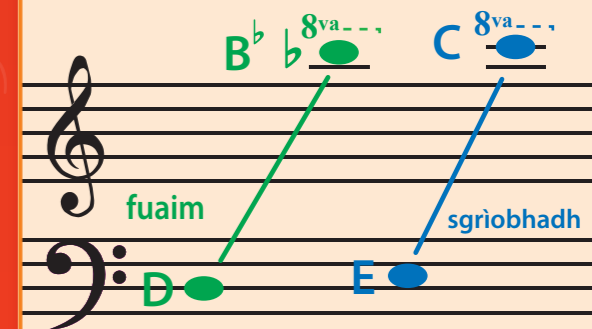
Raon Pitse



Clàirneid



Raon Pitse



An Teaghlach Sèideadh-fiodha - Pàirt a Dhà

Beus-chlàirneid



Raon Pitse

Basùn



Raon Pitse

Basùn Contra



Raon Pitse

Sagsafòn (Alto)



Raon Pitse

Sagsafòn (Teanor)

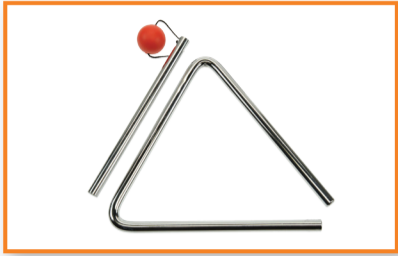


Raon Pitse

An Teaghlach Buille-chiùil

Buille-chiùil Neo-ghleusaichte

Chan urrainn ionnsramaid buille-chiùil neo-ghleusaichte fonn a chluich, dìreach ruitheam.



Triantan



Tiompan



Beus-dhruma



Castanetean



Teud-dhruma



Bloc Fiodha



**Tam Tam
(Gong)**



**Druma
Tom Tom**



Ciombalan



Bongothan



Maracathan



Congathan

Buille-chiùil Ghleusaichte

'S urrainn ionnsramaid buille-chiùil ghleusaichte fonn a chluich.



Glockenspiel



Saidhleafon



Bhibreafon



Celesta



Clagan Tiùbach

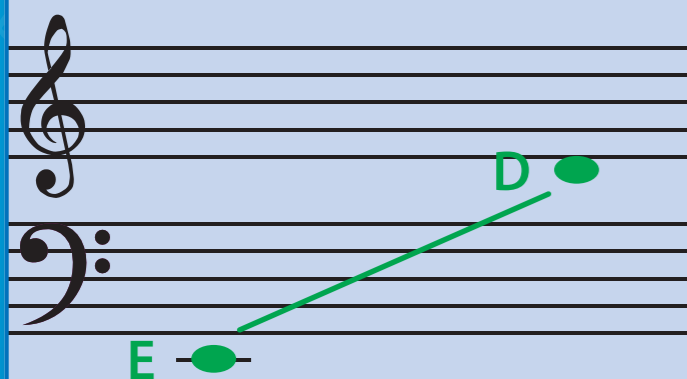


Tiompaini

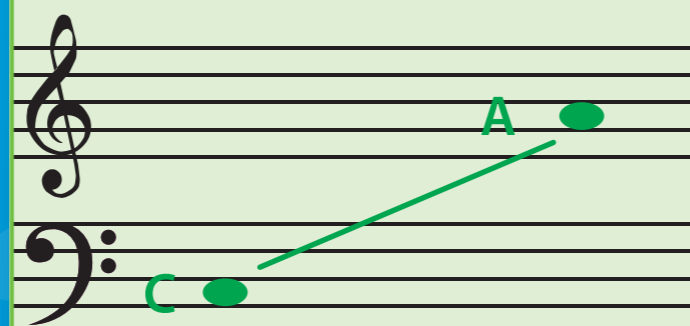
Guthan

Tha ceithir prìomh raointean guth ann: sopràno, alto, teanor, agus beus.
Tha am fìor raon aig guth neach ag atharrachadh bho dhuine gu duine.

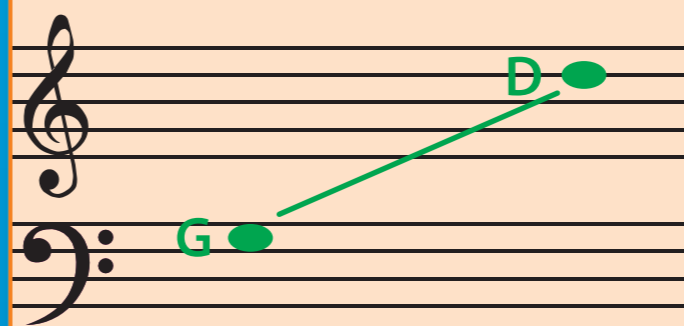
Beus



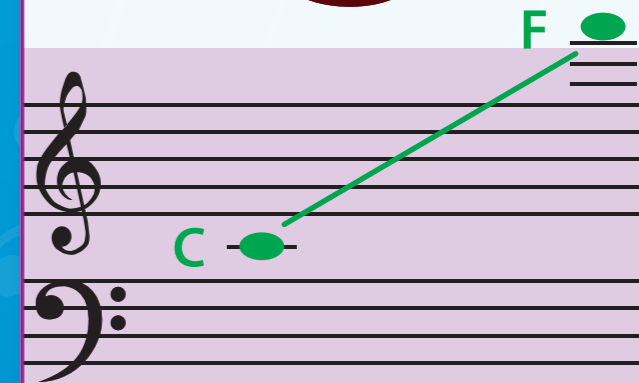
Teanor



Alto



Sopràno



Pitse Ìosal

Pitse Àrd

Baratòn

Tha an raon seo eadar beus agus teanor.

Contra-teanor

'S e guth àrd fireannaich a tha anns an raon seo (alto fireann).

Meatso-sopràno

Tha an raon seo eadar alto agus sopràno.

Ionnsramaidean an t-Saoghail

 **Druma Ceilteach
Fidheall**
Èirinn




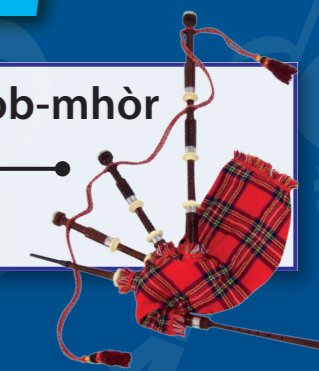
 **Giotàr Spàinneach,
Castanetean**
An Spàinn



 **Còisir Fhireannaich,
Harp**
A' Chuimrigh




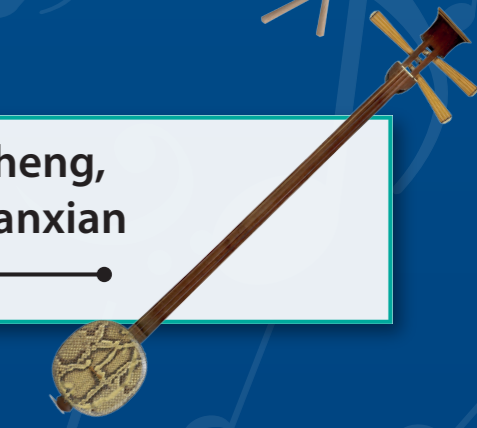
 **A' Phìob-mhòr**
Alba




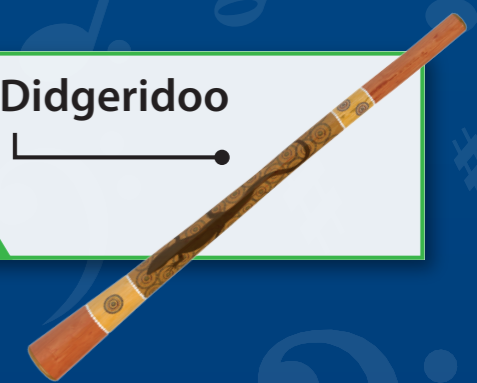
 **Koto,
Taiko**
Iapan




 **Sheng,
Sanxian**
Sìona




 **Didgeridoo**
Astràilia




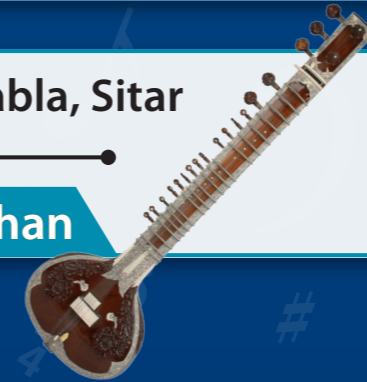
 **Drumaichean Stàilinn**
An Caribbean



 **Djembe**
Afraga



 **Tabla, Sitar**
Na h-Innseachan



 **Gamelan**
Indonisia



An Giotàr

Tha an giotàr na ionnsramaid theudach mheasail.

Notaichean Giotàr

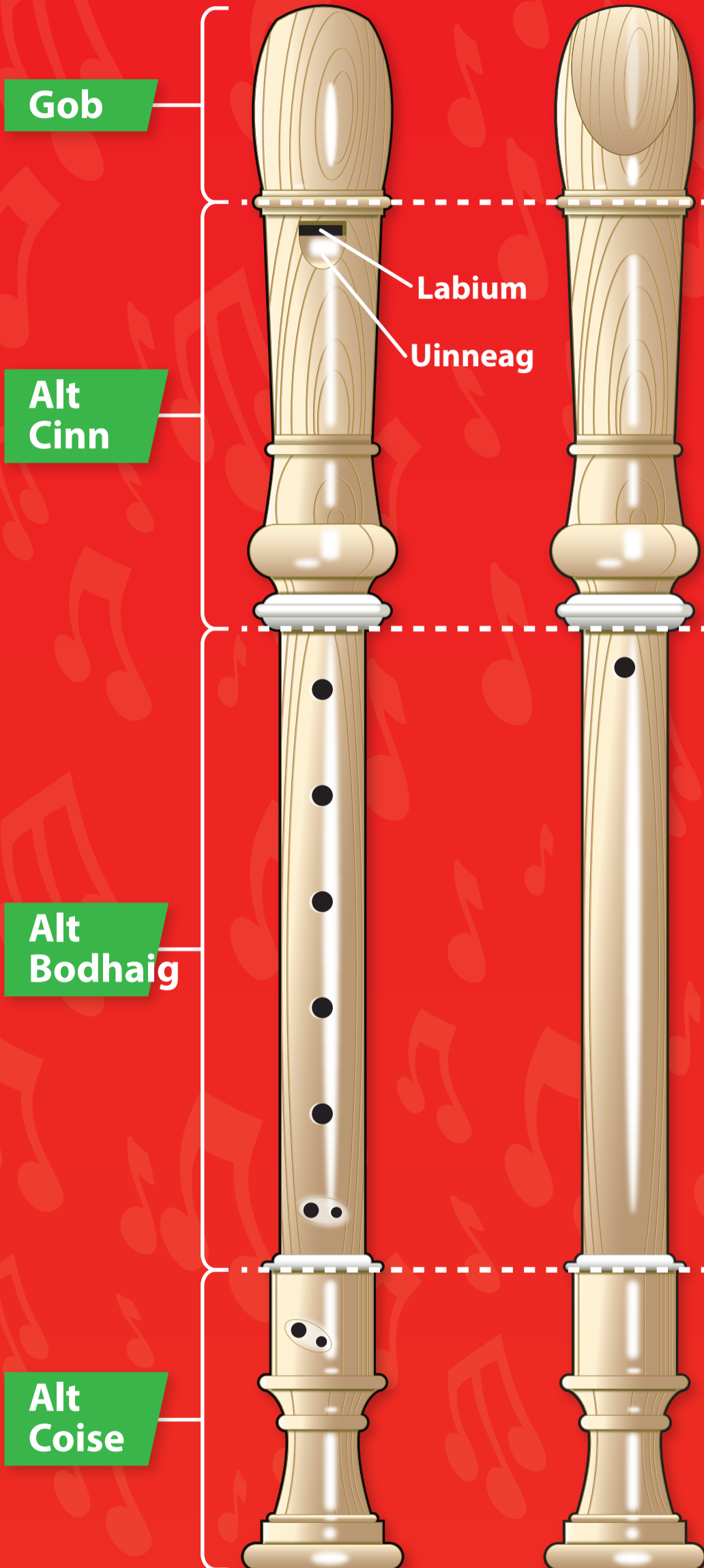
Tha notaichean air an cluich air bòrd-ceap air amhach a' ghotàr. Tha na notaichean ann a-rithist nas ìsle air a' bhord-ceap, ach tha am pitse ochdad nas àirde.

Notaichean Teud Fosgailte

| | E | A | D | G | B | E |
|-----------|----------------------------------|----------------------------------|----------------------------------|----------------------------------|----------------------------------|----------------------------------|
| 1d Ceap | F | A [#] B ^b | D [#] E ^b | G [#] A ^b | C | F |
| 3mh Ceap | F [#] G ^b | B | E | A | C [#] D ^b | F [#] G ^b |
| 5mh Ceap | G | C | F | A [#] B ^b | D | G |
| 7mh Ceap | G [#] A ^b | C [#] D ^b | F [#] G ^b | B | D [#] E ^b | G [#] A ^b |
| 9mh Ceap | A | D | G | C | E | A |
| 12na Ceap | A [#] B ^b | D [#] E ^b | G [#] A ^b | C [#] D ^b | F | A [#] B ^b |
| | B | E | A | D | F [#] G ^b | B |
| | C | F | A [#] B ^b | D [#] E ^b | G | C |
| | C [#] D ^b | F [#] G ^b | B | E | G [#] A ^b | C [#] D ^b |
| | D | G | C | F | A | D |
| | D [#] E ^b | G [#] A ^b | C [#] D ^b | F [#] G ^b | A [#] B ^b | D [#] E ^b |
| | E | A | D | G | B | E |

An Reacòrdair

Clàr Meurachaidh



| | |
|---------------------------------------------------|---------------------------------------------------|
| C Ìosal Làmh Chli Làmh Dheas | D Ìosal Làmh Chli Làmh Dheas |
| E Làmh Chli Làmh Dheas | F Làmh Chli Làmh Dheas |
| G Làmh Chli Làmh Dheas | A Làmh Chli Làmh Dheas |
| B Làmh Chli Làmh Dheas | C Àrd Làmh Chli Làmh Dheas |
| D Àrd Làmh Chli Làmh Dheas | F# Làmh Chli Làmh Dheas |

Cuimhnich!

Dèan cinnteach gu bheil do chorragan a' falach nan toll.
Cuir do làmh chli os cionn do làimh dheis air alt na bodhaig.

Linntean Ciùil

Meadhan-aoiseach (Suas gu 1450)

- Ceòl monofonaig (aon-loidhne) bu mhotha
- Ceòl eaglais sa mhòr-chuid
- Toiseach contrapuing



Guillaume de Machaut
c.1300–1377

An t-Ath-bheothachadh (1450-1600)

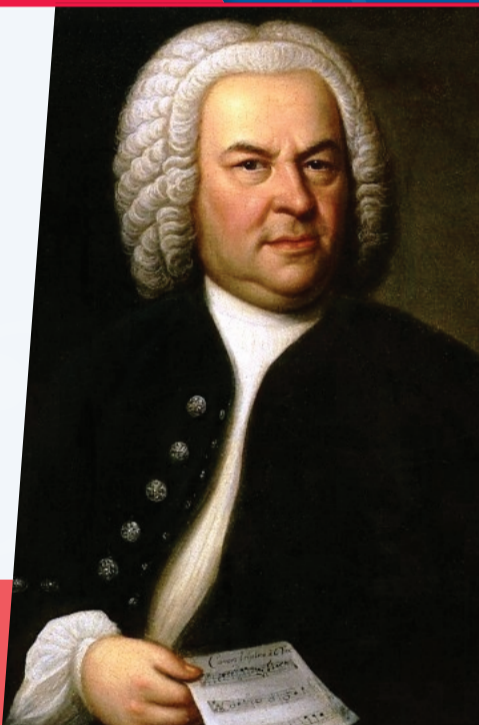
- Ceòl contrapuntal
- Ceòl ionnsramaideach do bhuidhnean
- Am prìomh chruth – rèiteachaidhean den Aifreann



Josquin Desprez
c.1450–1521

Baroc (1600–1750)

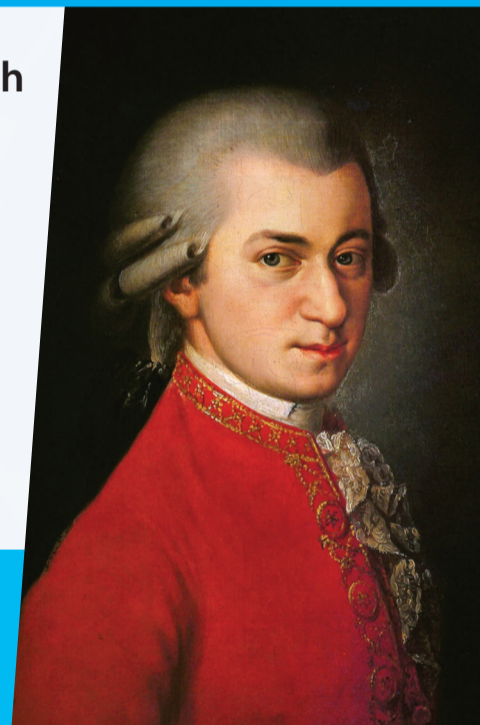
- Coimeasgadh de chontrapuing agus co-sheirm
- Sgaradh eadar stoidhlichean guth agus ionnsramaid
- Leasachadh air opara agus concerto grosso



Johann Sebastian Bach
1685–1750

Clasaigeach (1750-1825)

- Stoidhle cho-sheirmeach shìmplidh
- Leasachadh air cruth sonàta
- Leasachadh air siomfonaidh 's air ceathrar-cheòl teudach



Wolfgang Amadeus Mozart
1756–1791

Romansach (1825-1900)

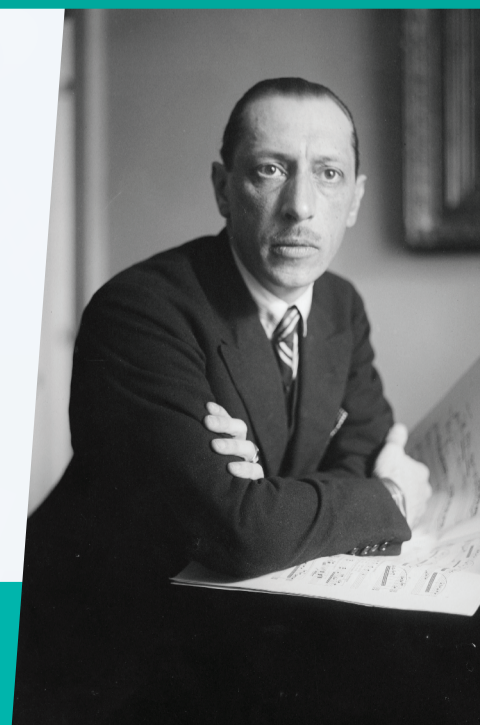
- Faclan a' toirt buaidh air stoidhle ciùil
- Susbaint gu math faireachail air a leasachadh
- Lieder agus dàn siomfonaig air an cruthachadh



Clara Schumann
1819–1896

Nuadh (Bho 1900)

- Eu-tònalachd air a leasachadh
- Cleachdadh ghuthan agus ionnsramaidean air a leudachadh
- Stoidhlichean fa leth aig cruthadairean-ciùil



Igor Stravinsky
1882–1971

Meadhan-aoiseach (suas gu 1450)

'Moladh gach nì anns a bheil anail an Tighearna. Molaibh-se an Tighearna.' Salm 150

'S e an linn Meadhan-aoiseach an linn as fhaide, agus as iomallaiche, ann an eachdraidh ciùil. Bha a' mhòr-chuid de chruthadairean-ciùil co-cheangailte ris an eaglais agus a' faighinn taic bhuaipe. Bha a' channtaireachd Ghriogarach air a seinn an toiseach gu h-aon-ghuthach le manaich, ach ri tìde, chaidh pìosan eile a chur rithe agus dh'fhàs contrapuntal aiste. Bha ceòl neo-eaglaiseach air a dhèanamh le flidhean.

Cruthadairean Meadhan-aoiseach



Manaich neo-ainmichte



Hildegard bho Bingen

1098-1179



Guillaume de Machaut

c. 1300-1377

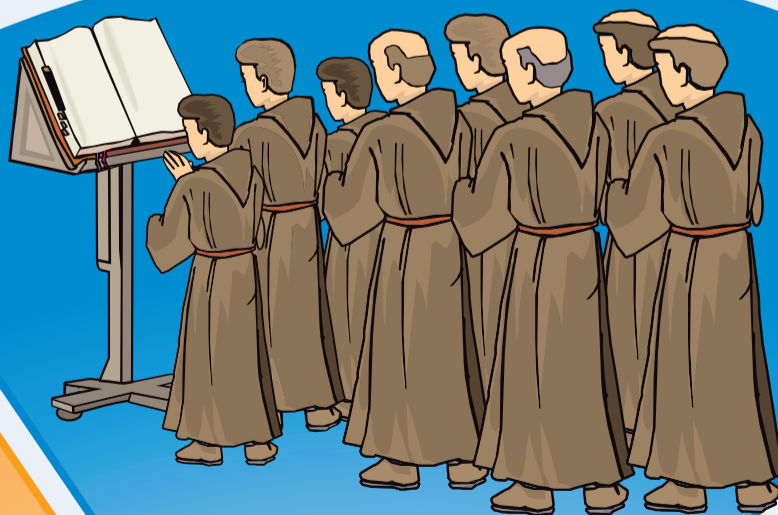
Feartan Meadhan-aoiseach

- Loidhnichean fonnmhor sìmplidh ann an gluasad ceumnach
- Air a chruthachadh ann am mòdan
- Canntaireachd Lom/ Canntaireachd Ghriogarach
- Organum

Ionnsramaidean Meadhan-aoiseach



Clàrsach



Guthan



Òrgan

An t-Ath-bheothachadh (1450-1600)

'Freagarrach do bhìolathan no guthan.' Morley

Tha 'Ath-bheothachadh' a' toirt iomradh air an ùidh às ùr a bha aig daoine ann an ionnsachadh Clasaigeach aig an àm. Sgrìobh cruthadairean ceòl poilifonaig, contrapuntal do chòisirean gun taic-ciùil, ann an stoidhle a bha air leth freagarrach do ghuthan. B' e an eaglais am prìomh chùl-taic.

Cruthadairean an Ath-bheothachaidh



Josquin Des Prez

c.1440-1521



Palestrina

c.1525-1594



William Byrd

1543-1623

Feartan an Ath-bheothachaidh

- Contrapuing agus atharrais
- Seinn-phàirtean gun taic-ciùil
- Prìomh chruthan: Aifreann, Madrigal, Motet
- Gun sgrìobhadh air leth do ionnsramaidean
- Air a chruthachadh ann am mòdan

Ionnsramaidean an Ath-bheothachaidh



Bhìolathan



Guthan



Lutan

Baroc (1600 - 1750)

'Bidh na briathran nam bana-mhaighstir don cho-sheirm.' Monteverdi

San linn Bharoc, chaidh gleusan màidsear agus mìnear a stèidheachadh. Dh'fhàs am fonn agus am beus na bu chudromaiche na na pìosan a-staigh. Chaidh sgrìobhadh air leth do ionnsramaidean a leasachadh. Dh'fhàs seatadh-fhaclan cudromach. Chòrd e ri cruthadairean-ciùil cluich le àiteachan, a' cleachdadh buaidh antifonaidh agus mac-talla.

Cruthadairean Baroc



Claudio Monteverdi

1567-1643



Johann Sebastian Bach

1685-1750



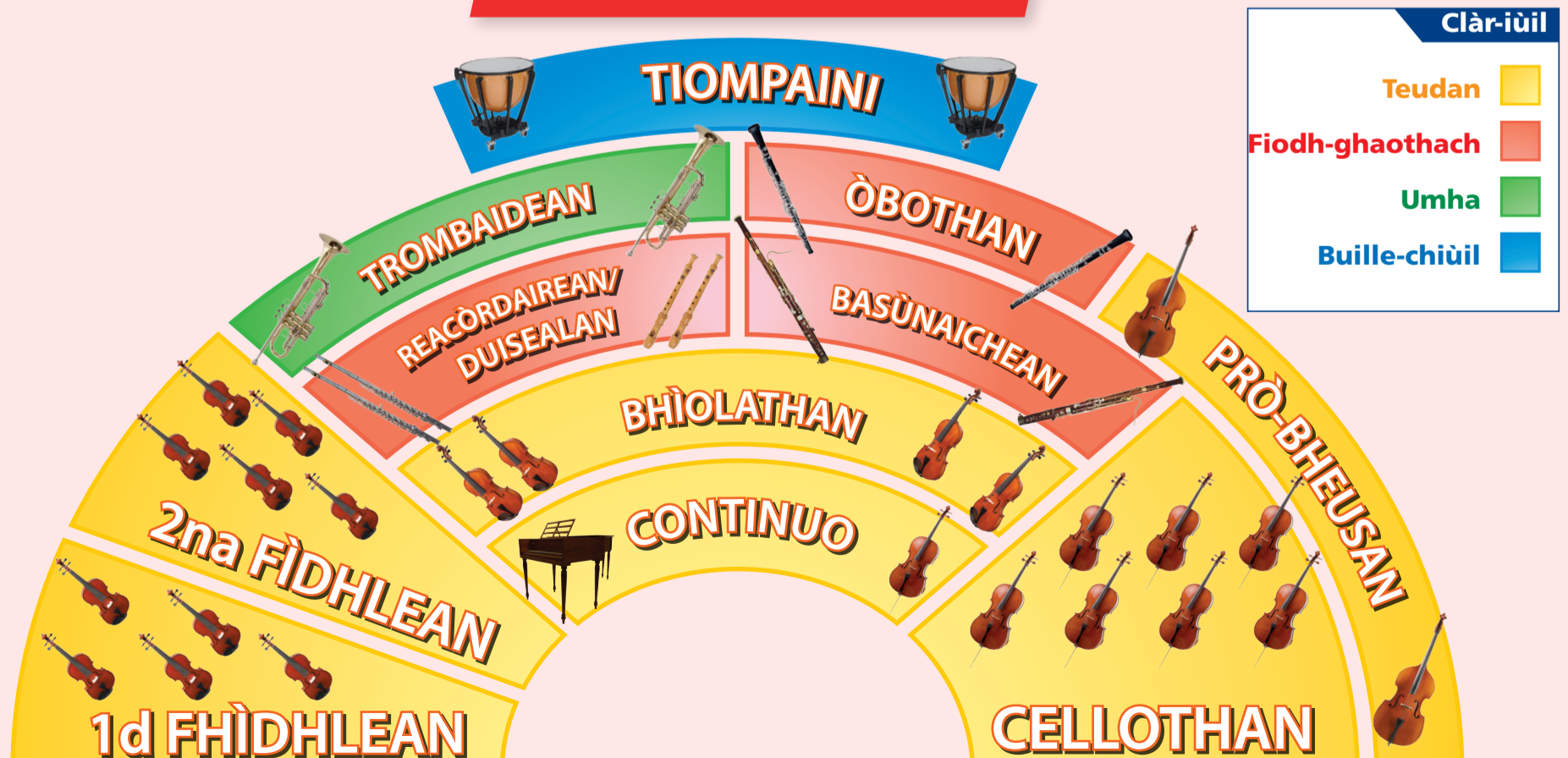
George Frideric Handel

1685-1759

Feartan Baroc

- Harpsacord/ Òrgan Continuo
- Gleusan màidsear agus mìnear gan stèidheachadh
- Buaidh spàsail agus sgrìobhadh antifònal
- Coimeasgadh de chontrapuing agus co-sheirm
- Mòr-sgeadachadh
- Cruthan ùra: Opara, Oratorio, Concerto Grosso

Orcastra Bharoc



Clasaigeach (1750-1825)

'Leasaich Haydn, Mozart agus Beethoven ealain ùr.' Hoffman

Bha an t-àm Clasaigeach na linn de bhalans agus òrdugh, àm nuair a thug rangachd thònalach shoilleir – gu sònraichte pòlarachd eadar an tonaig agus an ceannasach – buaidh air fonn, co-sheirm agus cruth. Sgrìobh cruthadairean ann an earrannan goirid, ùineach, altanaichte a bha air an comharrachadh le dùnaidhean sìmplidh.

Cruthadairean Clasaigeach



Joseph Haydn

1732 - 1809



Wolfgang Amadeus Mozart

1756 - 1791



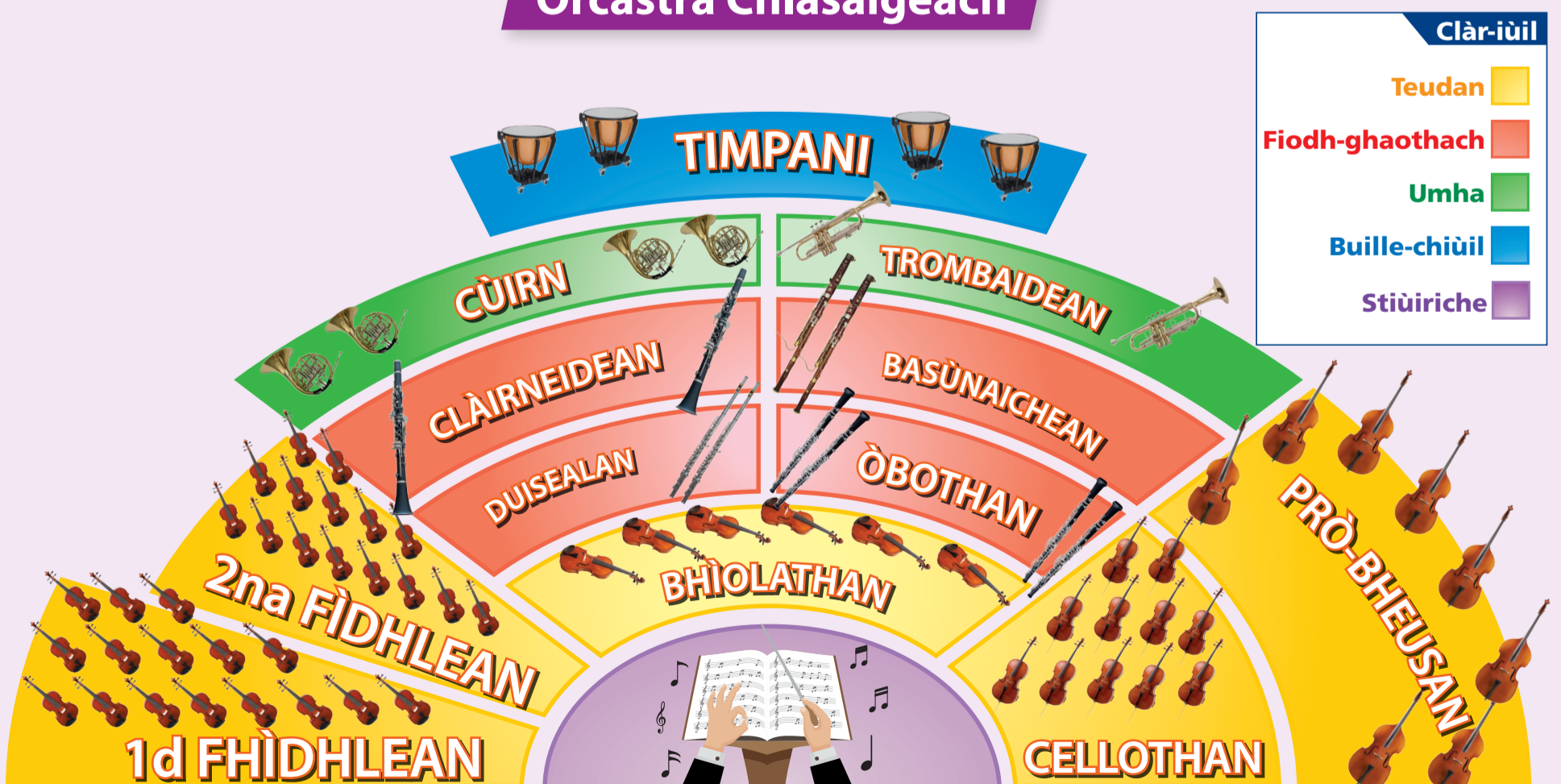
Ludwig van Beethoven

1770 - 1827

Feartan Clasaigeach

- Structar co-sheirmeach, soilleir
- Structar soilleir air earrannan
- Leasachadh Cruth Sonàta
- An Tonaig agus an Ceannasach a' toirt buaidh air gach taobh de stoidhle ciùil
- Cruthan Ùra: Ceathrar-cheòl Teudach. Siomfonaidh; Concerto Aon-ionnsramaid

Orcastra Chlasaigeach



Romansach (1825-1900)

'S e ceòl an ealan as Romansaiche de na h-ealain gu lèir.' Hoffman

Bha ceòl san Linn Romansach faireachail agus cruthachail. Bha cànan ceòl clasaigeach air a leudachadh 's air a leasachadh, gu h-àraidh le buaidh fhaclan. Leudaich cruthan romansach gu bhith gu math na b' fhaide na na modailean clasaigeach aca. Thòisich stoidhlichean nàiseanta. Bha cruthadairean ag obair air an ceann fhèin.

Cruthadairean Romansach



Franz Schubert

1797 - 1828



Franz Liszt

1811 - 1886



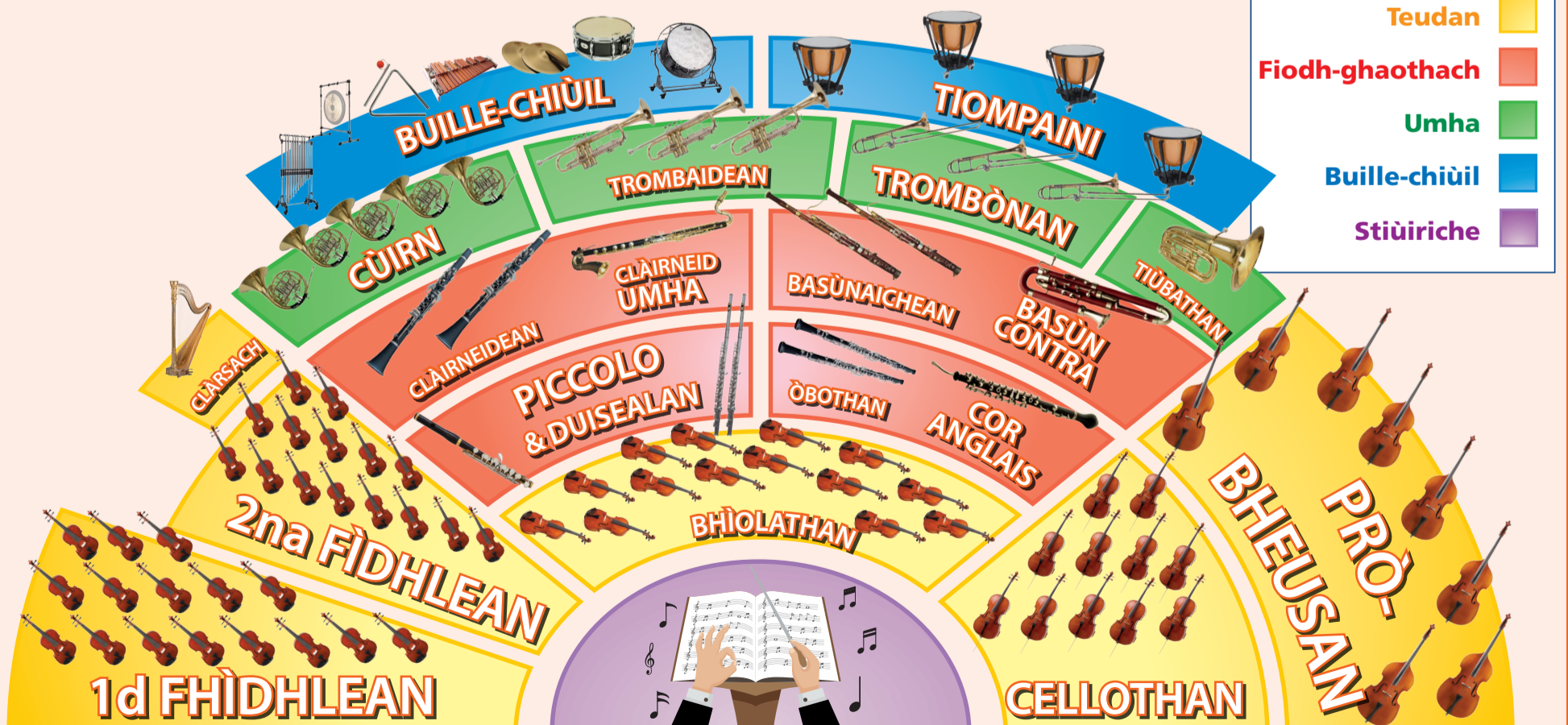
Richard Wagner

1813 - 1883

Fearan Romansach

- Co-sheirm chromataig
- Prògraman agus structaran le faclan
- Buaidh bho thaobh a-muigh ciùil, gu h-àraidh peantadh agus litreachas
- Cruth nas saoire agus dath-tòna nas beartiche
- Cruthan ùra: *lied* Ghearmailteach cuairt-òran, dàn siomfonaig, concerto virtuoso, dràma ciùil

Orcastra Romansach



Nuadh (1900 - an-dràsta)

'Tha amannan ann de leagail agus de lorg.' Boulez

B' e àm feuchainn agus rannsachaidh a bha san fhicheadamh linn. Dhiùlt cruthadairean an gràmar traidiseanta aig ceòl agus leasaich iad cànanan ciùil pearsanta. Chaidh dòighean cruthachaidh ùra a lorg agus chuir cruthadairean eileamaidean bho cheòl folk, agus bho chultaran eile, ris na stoidhlichean aca.

Cruthadairean an 20mh Linn



Arnold Schoenberg

1874 - 1951



Igor Stravinsky

1882 - 1971



Benjamin Britten

1913 - 1976

Feartan an 20mh Linn

- Ceòl gu math cromataig agus eu-tònalach
- Sreathachas
- Ceòl eileagtronaigeach
- Feum leudaichte de dh'ionnsramaidean agus guthan
- Ruitheaman coimpleacs
- Sgèilean agus mòdan ùra

Orcastra an 20mh Linn

